

# VISITOR'S GUIDE 2024-2025

## ATHABASCA - BOYLE AND DISTRICT

PROUDLY CREATED BY:

The Athabasca  
**Advocate**

**FREE**



# Welcome to Athabasca

**W**elcome to the Town of Athabasca!

Come and experience our unique culture, history and character. Situated on the banks of the mighty Athabasca River, our town and surrounding area offer year-round activities for all to enjoy. Sign up for a historical walking tour to experience

our history and culture firsthand or come and check out our Farmers' Market that operates every Saturday throughout the summer.

I also invite you to come and spend time at our riverfront. It is the jewel and hub of our downtown community. Enjoy an afternoon picnic with your family while the kids play at the Rotary splash park, the Lion's playground or the skateboard and outdoor fitness parks.

While you are downtown, I encourage you to visit our shops and stores and any of our many excellent restaurants. You will find our business community to be very friendly and accommodating.

When you are in Athabasca, take advantage of a nature walk along the river on one of our many walking and biking trails. We offer more than 20 kilometres of walking, biking, and hiking trails to explore. Our trails are accessible year-round, so if you're into skiing, check out Muskeg Creek trails, which offers a variety of challenges from the beginner to the competitive skier.

We have outstanding recreational facilities including our aquatic and fitness center which opened in 2019. It is a magnificent facility and compliments our existing recreation facilities at the multiplex very well. Our 18-hole golf-course alongside the Athabasca River draws golfers from all over the province because of its beauty, peacefulness, and challenges. Come and check it out.

On behalf of Town Council and our entire community I welcome you to our town.



**Mayor  
Rob Balay**

**O**n behalf of Athabasca County, welcome! Our region has so much to offer, and we are pleased to share our county with you and host your outdoor adventure during your stay.

If you're getting away from an urban centre to reconnect with nature, you're in for a treat. Athabasca County boasts the great Athabasca River, which makes its way from Jasper, Alberta, through Athabasca and north through Fort McMurray to Lake Athabasca. It's a natural wonder that fascinates tourists and residents alike. Dip your toes or test the waters in a boat, canoe, or paddleboard. You won't be disappointed by the scenic beauty of the riverside.

Speaking of scenic, if hiking is your thing, the Athabasca Landing Trail is a must on your to-do list. The Trail's origin goes back to 1876, when it was built as an access route to the Hudson's Bay Company. A popular 11.7 km trek, the Athabasca Landing Trail begins in Athabasca and winds south along the Tawatinaw River. It truly is a hidden gem waiting to be rediscovered.

While you're here, experience our region's many campgrounds and day-use sites. Wind down and enjoy time with family and friends in peaceful surroundings. Be sure to bring along your swimming, hiking, fishing, and relaxing-around-the-fire gear.

If you're a history buff, you'll want to visit the Amber Valley Museum. It offers a glimpse into the history of the first African American families that came from Oklahoma and Texas to homestead in the area in the early 1900s. The museum is located within the Amber Valley Community Hall, east of the Athabasca townsite.

We can go on about the summers in Athabasca County, but it wouldn't be fair not to mention winter activities planned each season. Did you know that the County has nearly 300 kilometers of groomed snowmobile trails? Embrace winter by signing up for a family-friendly snowmobile rally – you'll be amazed by the white wonderland in north-central Alberta.

Whether you're here to hike, bike, boat, fish, golf, snowmobile, tour, or unwind by one of our many lakes, we hope you take back great memories of your time here and return to make more.



**Reeve  
Brian Hall**



# Welcome to the Village of Boyle

3

**T**he Village of Boyle is a thriving community located along the Highway 63 corridor between Edmonton and Fort McMurray. It serves as a hub for a large area that encompasses agriculture producers, forest industries, oil and gas service businesses, First Nation communities and cottagers living at Skeleton Lake, Amisk Lake, Long Lake, Hope Lake and North Buck Lake.



**Mayor  
Colin Derko**

Our vibrant business sector offers both everyday necessities and specialty products and services. You will find our business community to be both very friendly and accommodating while maintaining competitive pricing and a wide selection of products.

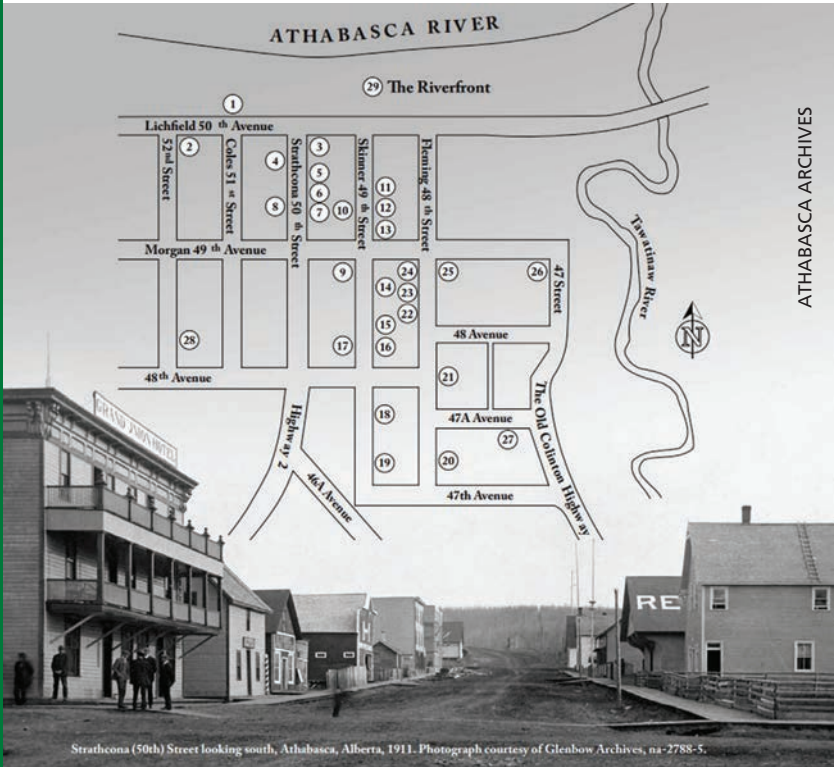
Our Municipal Centre is an architectural gem, housing the Senior's Drop-in Centre as well as the Library and Archives. The Boyle Community Centre can seat hundreds and plays host to many events throughout the year. Our Millview Recreation Complex boasts an arena and curling rink.

The Boyle Agricultural Society remains active year-round hosting workshops and 4-H events, barrel racing, Farmer's Market, various concerts and community friendly events.

In the summer, enjoy our ball diamonds, skateboard park, sand volleyball courts, spray park and tennis. Go golfing at the Skeleton Lake Golf & Country Club or Northern Ridge Golf & RV Resort. Go swimming, boating, water skiing and camping at any of our nearby lakes. Flat Lake is a haven for birdwatchers and is just west of Boyle.

On behalf of the citizens of Boyle and the rest of the council, I welcome you to Boyle.





## CANADA'S BUILDING BLOCKS

The Athabasca region enjoys a deep and rich history. The region was first settled as the Hudson's Bay Company's "headquarters of northern transportation" and "gateway to the north."

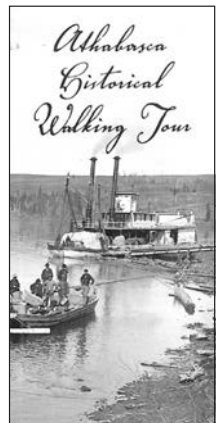
Athabasca Landing was a meeting place of First Nations, Métis, and Europeans, and gained the national stage by 1900 – as the key transportation centre linking the Hudson's Bay Company and other independent traders to Canada's northwest and the Arctic. [athabascaheritage.com](http://athabascaheritage.com)

## WALKING TOUR

From the early days as a frontier town to the fire of 1913, Athabasca – or Athabasca Landing, as it was known – was built by a complex web of peoples.

The "Athabasca Historical Walking Tour" guide takes visitors and locals alike through layered histories and how the town came to be. Starting at the Athabasca Train Station, you can walk either along the riverfront or back up toward the downtown core.

Download the map and other publications at <https://www.athabascaheritage.com/publications>





## **Athabasca Regional Multiplex Fitness & Aquatic Centre**

Located on the west side of Athabasca, our Multiplex houses an arena, curling rink, 25-metre swimming pool, kiddie pool, hot tub, lazy river and a water slide, as well as the indoor fieldhouse. Outside are baseball diamonds, soccer pitches and playgrounds. The Multiplex can host all of your sporting events, meetings, parties or conferences in their spacious rooms upstairs.

780-675-2967 | [athabascamultiplex.ca](http://athabascamultiplex.ca)

## **Nancy Appleby Theatre**

Featuring 280 seats, a 780-square-foot stage, a green room, fully equipped modern lighting and sound board technology, this theatre can hold any type of performance drawing in local, national and international productions.

780-675-2967 | [athabascamultiplex.ca](http://athabascamultiplex.ca)

## **Athabasca University**

As Canada's Open University, AU serves over 40,000 students, offering over 850 courses in more than 55 different programs. Stroll around the campus, or schedule a tour of the building. For a tour call: 780-675-6349

## **Northern Lakes College**

Northern Lakes College is a unique and growing institution that serves a region covering 164,000 square kilometers and more than 50 communities, including 10 First Nations and four Métis Settlements. Athabasca is home to one of their campuses located at Athabasca University. 780-675-9484

## **Shopping in the downtown district**

Athabasca's commercial district offers a variety of gift, craft and specialty stores, plus all the essentials for residents and visitors alike. Watch out for Moonlight Madness in November, and Customer Appreciation Day in July.

## **QUICK STOPS**

### **Athabasca Riverfront Park**

The historic Athabasca Landing features a spray park, skateboard park, playground, fitness equipment, boat launch, picnic area, walking trail, outdoor stage and heritage displays, plus parking for larger vehicles.

### **Lions Centennial Park**

Enjoy the view of the town from across the river at the Lions Centennial Park. To access the park, take Highway 813 north and your first left after you cross the Athabasca River bridge – watch for signs.

### **Boyle Splash Park/Skate Park and Tennis Court**

Located in Boyle next to the Arena, you will find something for everyone. Cool off at the spray park, get a workout, daydream in fields while watching the clouds or take some photos at the gazebo.

### **Off-leash Dog Park**

An old baseball diamond has been converted to an off-leash dog park. Tucked away on the south side of town turn east onto 46a Ave. across from Fas Gas on Hwy 2 and follow that to the end of the road. 4504-48 Street

# 6

## Alice B. Donahue Library and Archives

Open to the public year-round except for holidays, the Town of Athabasca Library has an extensive collection of books, reference books, DVDs, magazines, and e-resources. Services include free access to computers/

internet, free WIFI, an assistive technology workstation, examination proctor, and photocopying/printing at a nominal cost. The Library also offers programming for children, adults, and seniors. Please check the website for programs, and for the days and times the Library is open.

780-675-2735 | <https://www.athabascalibrary.ab.ca/> | [ajohnson@athabascalibrary.ab.ca](mailto:ajohnson@athabascalibrary.ab.ca)



## Athabasca Native Friendship Centre

Traditional Native crafts and art available for purchase. On Fridays, enjoy a lunch of bannock and soup. Visit the second-hand Riddle Shop downstairs. 4919 53 Street, Athabasca. 780-675-3086



- Fitness Centre
- Aquatic Centre
- Fieldhouse
- Arena
- Curling Rink
- Lounge
- Time Out Concession
- Performing Arts Theatre
- Meeting Rooms
- Private Rentals
- Baseball Diamonds
- Sports Fields
- Catering

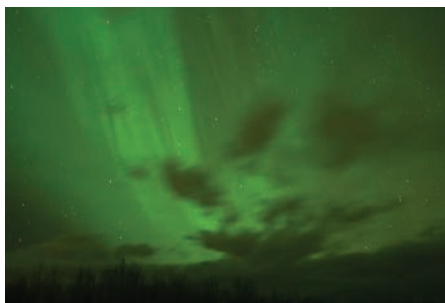




## Athabasca Archives

The holdings in Athabasca's public Archives relevant to the area include 85 metres of textual records, 20,000 photographs, microfilmed and PDF newspapers from 1908 to the present, maps and blueprints, school yearbooks, artefacts, and a collection of local art. Staff is available to help with your research and answer your questions. Please check the website for the days and times the Archives is open.

780-675-2735 | [athabascaarchives.org](http://athabascaarchives.org) | [manderson@athabascalibrary.ab.ca](mailto:manderson@athabascalibrary.ab.ca)



## Boyle Public Library

Located in the municipal building in Boyle, the library provides free public access to computers, the Internet, and offers wireless connections. The Boyle Public Library holds a popular summer reading program in July and August as well as story hours and Read and Rhyme programs and has a Digital Accessible Information System (DAISY) for the visually impaired. Other services are photocopying, scanning, colour printing, faxing and exam proctoring all for a nominal fee. Please check the website for hours and pricing of our other services.

780-689-4161 | [boylelibrary.ca/](http://boylelibrary.ca/)

## Athabasca Pottery Club

Located in the historic Old Brick School, the club uses local clay to hand build, throw and fire pots sold in a spring pottery sale. Find them on [Facebook](#).

## Hawkey Studios

A puppet production company offering workshops, live puppet shows, and custom order puppets. Also offered are music lessons, a recording studio (The Nest), sewing lessons and more. Visit them at 4818-49 Street in Athabasca or [hawkeystudios.com](http://hawkeystudios.com) or find them on [Facebook](#) and [YouTube](#).

## FLOWERS BY CHRISTINA

\* Flowers & Gifts \*

\* Quality \*

\* Friendly Service \*

#2-4909 - 50TH STREET, ATHABASCA, AB  
PHONE: (780) 675-3220 - TOLL FREE 1 (800) 378-0569  
[@flowersbychristina](#) [Flowers By Christina](#)



780-212-3687 • 780-675-5809  
4018 - 53 ST, ATHABASCA

Residential and Industrial with  
Mon-Fri 8am-5pm  
Sat 9am-1pm

## Propane Fills

Rentals -  
Generators - Small and Large,  
Porta Potty, Tents

MUCH MORE  
AVAILABLE IN-STORE

## Amber Valley

In the early 1900s, 170 Black settlers came from Oklahoma in search of a more tolerant home and formed the community of Amber Valley, east of Athabasca. Though most of the original families have moved on, the Amber Valley Cultural Centre, and Jordan Murphy Cemetery remain. Tours of the museum are available by appointment.

780-675-4699 | 780-675-3490 (Museum)

## Atmore

Located at the junction of Highways 63 & 55 where Fort McMurray travelers make the final northward turn, residents show their community pride through two signature events: the annual Hoof-a-Thon trail ride in support of the world-leading Mazankowski Alberta Heart Institute and the popular Community Christmas Supper supporting the local food bank and Santas Anonymous program.

780-525-3966

## Calling Lake

Located north of Athabasca on Highway 813, Calling Lake is the earliest known settlement in the region. First Nations tribes discovered plentiful fishing in the lake, which remains today as one of the preferred spots for anglers. Part of the Bigstone Cree Nation, Calling Lake offers camping, summer and full-time cottage living.

## Colinton

Located south of Athabasca in the scenic Tawatinaw River valley. The Colinton Hotel's Thursday steak nights, held through the summer months, draws regular visitors from as far away as Edmonton.

## Grassland

Located on the east side of our region along Highway 63, Grassland is well known as a convenient stopping point

for travelers between Edmonton and Fort McMurray. The community offers options to fuel vehicles and motorists alike, with events throughout the year.

## Perryvale

Located just off Highway 2, deep in the Tawatinaw Valley, Perryvale carries a nostalgic feel with the classic architecture of its church, old-style general store and community centre. Locally-produced honey is available and is popular throughout the summer.

## Rochester

A historic community founded in 1912 by the Canadian Northern Railway, Rochester remains an active, vibrant community. The local agricultural society hosts dances, suppers, bingo and other events through the year. A highlight featured every August is the Rochester Fair, featuring a parade, children's games, heavy horse pulling events and an old-time bench show.

## Smith-Hondo

In the northwest corner of our region lie the twin communities of Smith & Hondo. Located near the joining of the Athabasca and Lesser Slave Rivers, it's a popular launching point for canoe or raft trips down the Athabasca River. The community shows its pride every Labour Day weekend with the Smith-Hondo Fall Fair that features animal exhibits, kids' games and exciting pony chuck and chariot races.

## Wandering River

The last stop on the northward trek up Highway 63 to Fort McMurray, Wandering River is a growing community. It offers a myriad of services for travelers and a fun yet challenging golf experience at the nine-hole Riverside Golf Course.

## SUMMER VILLAGES

### Baptiste & Island Lake

Located west of Athabasca, a handful of summer villages surround the neighbouring lakes of Baptiste and Island Lake.

Campgrounds, picnic areas, boating and fishing are available at both. Island Lake also has a special bird-watching area.

### Skeleton Lake

East of Boyle lies picturesque Skeleton Lake and the summer villages of Bondiss and Mewatha Beach. There are camping and picnic areas, as well as the Skeleton Lake Golf Course. Further east near Caslan lie Amisk Lake and North Buck Lake, which also have day use areas.





*Where Customers & Quality Come First!*

\*Deliveries within town limits\*

Large Selection of Groceries • Premium Meats  
 Fresh Produce • Full Service Bakery & Deli  
 Gift Cards Available

*Personal Service with Competitive Prices!*  
*"Thanks for Shopping Locally!"*

780-689-3757

5127-4th Street, Boyle  
[www.buy-low.com](http://www.buy-low.com)

Our Deli has the  
**BEST** Chicken & Wedges  
 in Town!

**Hours of Operation**

Monday 8 a.m. – 8 p.m.  
 Tuesday 8 a.m. – 8 p.m.  
 Wednesday 8 a.m. – 8 p.m.  
 Thursday 8 a.m. – 8 p.m.  
 Friday 8 a.m. – 8 p.m.  
 Saturday 8 a.m. – 6 p.m.  
 Sunday 10 a.m. – 5 p.m.



**Lyle**  
 Store Manager - Boyle



Like us on Facebook  
 and instagram



## Turnabout Avenue Place

5412-50 Ave, Athabasca, AB

Call Or text 780-689-8516

email: [turnaboutavenueplace@gmail.com](mailto:turnaboutavenueplace@gmail.com)

**Rooms for Rehearsals, Crafts, Workshops,  
DIY Projects**

**Dream, Dare, Do**

**Rates by the Hour, Day and Week  
Cooperative and Collaborative Facility for  
Learning through the Arts**



## Athabasca Native Friendship Centre Society

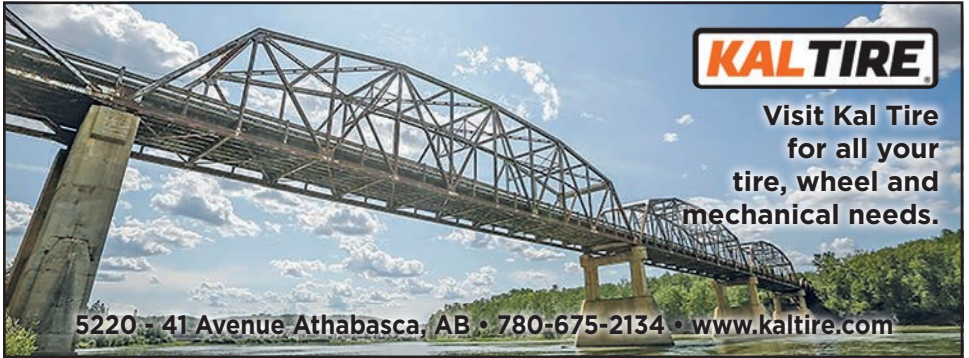
Cultural Crafts & Activities, Office Services,  
Referral and Advocacy, Gift Shop, Community Garden,  
Friday Soup & Bannock, Thrift Shop.

<https://anfca.com/friendship-centres/athabasca/>  
Monday-Friday 9:00-4:30

Closed 12:00-12:30 Monday-Thursday

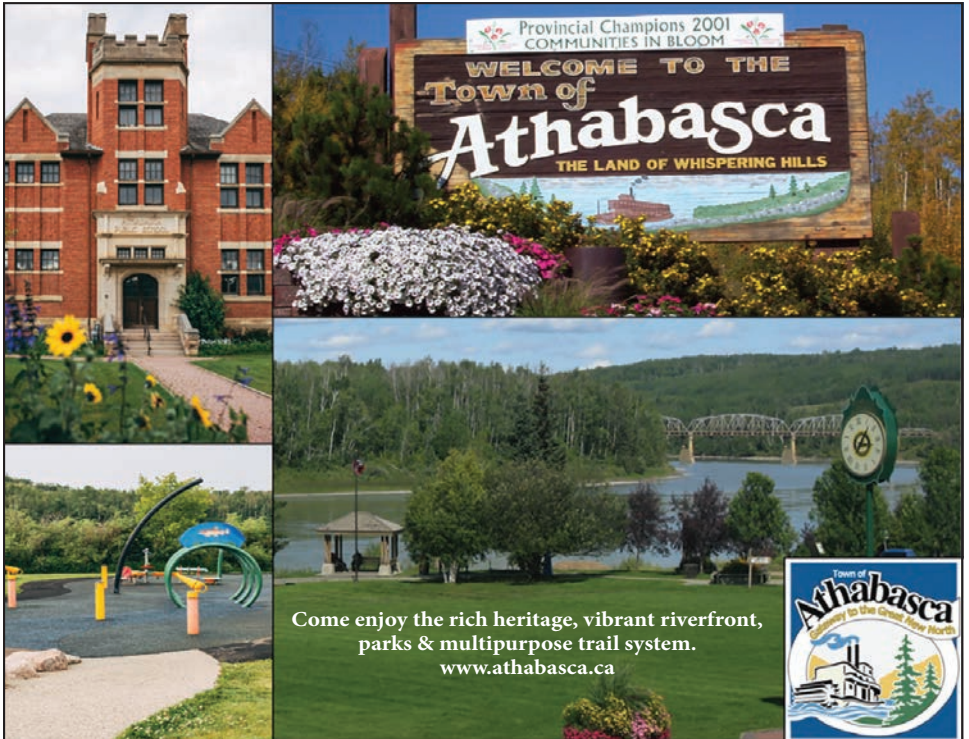
### RIDDLE THRIFT SHOP

Clothing • Accessories • Footwear  
Household • Books • Home Décor • Toys • More!  
Monday 11:00-4:15 • Tuesday-Friday 9:00-4:15



**Visit Kal Tire  
for all your  
tire, wheel and  
mechanical needs.**

5220 - 41 Avenue Athabasca, AB • 780-675-2134 • [www.kaltire.com](http://www.kaltire.com)



Provincial Champions 2001  
COMMUNITIES IN BLOOM  
**WELCOME TO THE  
Town of  
Athabasca**  
THE LAND OF WHISPERING HILLS

Come enjoy the rich heritage, vibrant riverfront,  
parks & multipurpose trail system.  
[www.athabasca.ca](http://www.athabasca.ca)



## Pastimes

Watch for bonspiels in both Athabasca and Boyle as well as concerts, plays and more. Winter is a great time to check out the trails in and around Athabasca and farther south in the Tawatinaw Valley for downhill and cross-country skiing opportunities. Ice fishing is always a popular pastime. Don't forget about square dancing every Sunday afternoon in Boyle and every Friday evening in Athabasca.

## Athabasca Farmers Market

You can enjoy this Alberta-approved farmers' market year-round weekly on Saturdays during the summer on the beautiful Athabasca riverfront. When it gets cold, the market becomes weekly and moves to the Multiplex. [780-675-4398](tel:780-675-4398). Find their schedule and vendor list on [Facebook](#).

## Boyle Farmers Market

The Boyle farmers' market meets from mid-May to mid-September on Thursdays at the Boyle Community Centre and holds special holiday markets throughout the winter season. Follow them on [Facebook](#).

## MAY

### Atmore Hoof-A-Thon

This annual trail ride, taking place on May 4th, 2024, raises money in support of the world-leading Mazankowski Alberta Heart Institute in Edmonton. A donation gets you a full day of activities, meals and entertainment. More information can also be found on the Atmore Community Hall Facebook page. Contact Travais for more information. [grassland37@yahoo.ca](mailto:grassland37@yahoo.ca) | [780-327-4357](tel:780-327-4357)

### Boyle Barrel Racing

Every Sunday in May the Boyle Agricultural Society hosts barrel racing. Run the cloverleaf in your fastest time at the Boyle rodeo grounds. Email the [BoyleAgSociety@outlook.com](mailto:BoyleAgSociety@outlook.com) or follow them on [Facebook](#) and [Instagram](#) for more information.

## JUNE

### National Indigenous Peoples Day

Join the Athabasca Native Friendship Centre to celebrate National Indigenous Peoples Day on June 21. Follow their [Facebook](#) page for more information and events.



# 2024 EVENTS

## Compass Chiropractic



*Alyssia Strandlund*  
Doctor of Chiropractic

4916B 50th Street, Athabasca  
780-675-2692  
[info@compasschiro.ca](mailto:info@compasschiro.ca)  
[compasschiro.ca](http://compasschiro.ca)

*The Medicine Shoppe*  
PHARMACY

**Pharmacists  
who care.**

**COME BY**

2810B - 48th Ave., Athabasca, AB  
P: (780) 675-3855  
Hours of Operation  
Monday to Friday:  
9:00 am - 6:00 pm  
Weekends: Closed



**Tracy Zimmer**  
B.Sc. Pharm, MHS,  
APA, CRE  
Pharmacist/Owner



HAWG FLATTS ANNUAL TOY RIDE EVENT - 2022

## JUNE

### Hawg Flatts Bike Rally & Pig Roast

Bikers everywhere know that Hawg Flatts is the place to be in June. The four-day event boasts a show 'n shine, bike rodeo, concessions and contests. The venue has the amenities you need to camp comfortably, including showers, fire pits and water. The secluded location, beer gardens and live music will keep you in good company. All age of majority are welcome.

### Jet Boat Poker Rally and Rodeo

**June 8 & 9, 2024**

All jet boats and watercrafts are welcome to participate! This is a popular event with boat owners from throughout the region and beyond and it provides a great way to get introduced to the amazing Athabasca River. The run operates like any other poker rally: stop in at the checkpoints to add a card to your hand, and the best poker hand wins. The fun doesn't end there – live music, kids' scavenger hunt, concession, cash prizes, and lots of door prizes make this an event for the whole family. Everything wraps up at Riverside Recreation Park, where you can camp for the night and participate in the boat rodeo on Sunday. Hosted by the Athabasca Riverboat

Association. Call Darcy at 780-689-0567 or Crystal at 780-689-9584. You can also follow them on [Facebook](#) for more information.

### Celebrate Lemonade Day in Northern Alberta!

Help us empower today's youth to be tomorrow's entrepreneurs! Lemonade Day is a free, fun, experiential learning program that teaches youth how to start, own and operate their own business – a lemonade stand. The foremost objective of Lemonade Day is to empower youth to take ownership of their lives and become productive members of society – the business leaders, social advocates, volunteers, and forward thinking citizens of tomorrow. Lemonade Day was brought to Northern Alberta in 2018 by one Community Futures office and was offered to participants in their region. Since then, Lemonade Day has spread to 11 Northern Alberta Community Futures regions.



**DOLLAR STORE**

Hours: Mon to Sat 9am-6pm • Sun 11am-4pm

*"Where you Pay Less and you Get More"<sup>®</sup>*

**780-675-7100**

*Seasonal, Crafts, Toys and Home Decor + More ... All in One*

4917- 50th Street • Athabasca, AB

## JULY

### Magnificent River Rats Festival

One of Northern Alberta's premier outdoor music festivals, attracting regional and national talent to its unique riverfront stage. The family festival boasts more than 16 hours of live music, a kids' zone, marketplace and lots of food. A Canada Day parade, classic car show, and fireworks round up a fantastic way to celebrate Canadian music talent.  
[riverratsfestival.com](http://riverratsfestival.com)

### Family Camp

The Athabasca Native Friendship Centre hosts their Family Camp in July. Call 780-675-3086 for information or follow them on [Facebook](#).

### Athabasca Regional Airport Fly-In BBQ

The annual Athabasca Regional Airport Fly-In BBQ takes place in July and offers a fun afternoon watching planes and learning about aviation. Last year's event drew over 4 planes and 1,300 spectators. Sponsored by Athabasca County, the event offers a free barbecue lunch, kids' activities and exciting demonstrations in the sky and on the ground. There is also a vehicle Show 'n Shine on the grounds.  
[athabascacounty.com](http://athabascacounty.com)

## AUGUST

### Back Pack Program

Watch for the Back Pack Program run by the Athabasca Native Friendship Centre in August. Be sure to follow them on [Facebook](#) for this and other events and programs.



BOYLE WILDBERRY FESTIVAL

### Boyle Wildberry Festival

This fun family festival draws hundreds from around the region every year for a Show 'n Shine, free face painting, RCMP display, Farmers' Market/Bench Show, kids carnival, motorcycle bike ride and local business specials. The Wildberry Festival is celebrating over 10 years of local entertainment.

### Rochester Fair

The annual Rochester Fair brings hundreds of visitors to the famed Main Street parade and Show 'n Shine, traditional jamboree, heavy horse pulls, marketplace and activities for the kids. Come for the day and bring your family – the pancake breakfast, great concessions, beer garden and steak supper in the evening will keep you well fed.

### Wally's 100th

**August 17-18, 2024**

Visit Rocky Lane Fairways in August to take part in the 9th stop on the new Cold Garden Cup disc golf tour. Play is open to Professional Disc Golf Association members of all ages, and registration for the event opens April 24 at 8 p.m. Visit [https://www.discgolfscene.com/tournaments/Wallys\\_100th\\_2024](https://www.discgolfscene.com/tournaments/Wallys_100th_2024) for more information and to sign up for the event.



ROCKY LANE FAIRWAYS & RECREATION



## Kapâwinihk Wilderness Triathlon

**Sept. 7, 2024**

Kapâwinihk is Cree for Athabasca Landing and the Kapâwinihk Wilderness Triathlon is a Triathlon Alberta sanctioned event that usually takes place in September in Athabasca, Alberta. The triathlon consists of a 12 KM trail run on the TransCanada Trail, a 10 KM bike ride along the Muskeg Creek Trails and a 25 KM trip down the mighty Athabasca River culminating at the Riverside Campground 25 KM northeast of Athabasca. Check out their website [parallel54.org](http://parallel54.org) for more information.

## Walk a Mile in her Shoes

Walk a Mile in her Shoes is an annual fundraising event hosted by PRAAC (Prevention of Relationship Abuse Action Committee) every September. [athabascapraac.ca](http://athabascapraac.ca)  
Or Call 780-519-0577

## OCTOBER

### Sisters in Spirit Vigil

The Sisters in Spirit Vigil will be held in the beginning of October. It is open to the public who want to show support and walk in solidarity with the families of missing and murdered Indigenous women. Follow the

Athabasca Native Friendship Centre's [Facebook](#) page for date, time and location.

## Take a Stroll

Take some time to stroll the Muskeg Creek Trails or wander down Tawatinaw Valley to see the vibrant fall colours. Can you spot the bison along the ridge just north of Colinton? The Athabasca Golf & Country Club closes Thanksgiving weekend, weather permitting, so get in some last rounds before the snow flies. Check out the amazing Hawkey Studios, a truly unique experience where you can watch them build puppets and ask them questions.

## NOVEMBER

### Moonlight Madness

When Christmas is just around the corner, downtown Athabasca gets in the spirit! The local Chamber of Commerce organizes the last Friday in November when stores are open late, Santa Claus leads the parade, and fireworks fill the sky. Shop local with these great deals, contests and activities.

### Kids Wrap

Every year the Athabasca Native Friendship Centre hosts a Kids Wrap in conjunction with the Athabasca Red Apple store. Check out the Athabasca Native Friendship Centre's [Facebook](#) page for more information.

While you are in the Athabasca area camping or visiting for the day, take your waste to our

### Recycle/Waste Transfer Sites

You can recycle cardboard, newspapers, (rinse items), food cans, glass bottles, drink cans, juice boxes and more. Check out our website for full details.



Phone: 780.675.1117  
[athabascaregionalwaste.com](http://athabascaregionalwaste.com)

Thank you for visiting our Community.

**SHANNON** **STUBBS MP**  
LAKELAND

5009-50 STREET, TWO HILLS,  
ALBERTA T0B 4K0  
SHANNON.STUBBS@PARL.GC.CA  
SHANNONSTUBBS.CA  
780-657-7075

# NOVEMBER

## Christmas Artisan & Gift Show

Athabasca University hosts an annual artisan market once the Christmas season begins to grow near. It showcases one-of-a-kind crafts, baked goods, specialty items, and entertainment for the whole family.

## Tis the Season

Holiday themed events happening throughout November & December. Check the calendar on the Athabasca Chamber of Commerce Website:

[www.athabascachamber.org](http://www.athabascachamber.org)

# DECEMBER

## Annual Bird Count

Since 1994 the Crooked Creek Conservancy and Science Outreach – Athabasca conduct their annual Athabasca Christmas Bird count December 24-30, where they spend several hours in the field observing and counting the boreal birds that reside across the region. For more information contact Ursula [780-675-9249](tel:780-675-9249) or Wayne [780-675-4461](tel:780-675-4461).

## Boyle Community New Year's Eve Dance

Held on December 31 this fun, family-friendly event is great place to take the whole family. Featuring a DJ, photo booth, crafts and more everyone will have fun. Watch the fireworks display at 10 p.m. Hosted by the Boyle Agricultural Society.

# JANUARY

## Winter Sports

Hockey tournaments, bonspiels, ice fishing and more should be temptation enough to get you outside and checking out the local events, restaurants, shopping and more. Take an indoor tour of the historic United Church or Train Station. Go skating on one of the many outdoor rinks in and around Athabasca. Grab some hot chocolate at any of our great restaurants. Curl up at the library with a good book, either in Athabasca or Boyle.

# FEBRUARY

## Athabasca River Runners Snowmobile Rally

Everyone is welcome in this family-friendly snowmobile rally, which offers short and long routes. The area trails are groomed by the River Runners and the ride follows part of the Trans Canada Snowmobile Trail. Participants receive a poker hand and free hot dog lunch along the trail. [athabascariverrunners.com](http://athabascariverrunners.com)

## Athabasca Loppet

Hosted by the Athabasca Northern Nordic Ski Club, this cross-country skiing event draws people from all over the province to the Muskeg Creek Trails. The 10 km track in the Town of Athabasca is groomed regularly for beautiful skiing anytime.

Follow them on [Facebook](https://www.facebook.com/athabascanordic).

**NEW OWNERSHIP**



**DR BRYHILL**  
BE SMART DO YOUR PART

**Junk Removal, Laborer, Local Movers,  
Property & Lawn Maintenance**

**CALL OR TEXT 780-598-5202**

# SNOWMOBILE TRAILS



N

[www.athabascariverrunners.com](http://www.athabascariverrunners.com)



# WINTER WARMTH IN THE COLD

17

GETTING BACK TO NATURE

## Cross-Country Skiing

In winter months, over 17 km of cross-country ski trails (1.2 km lighted) are maintained and groomed by the Athabasca Nordic Ski Club. Enter at the Muskeg Creek Chalet, by the Landing Trail Intermediate School, or at Athabasca University. For information on loppets and cross-country skiing follow the Athabasca Nordic Ski Club on Facebook. The Tawatinaw Valley Ski Area south of Rochester also has 25 km of groomed trails for classic and skate skiers. [skitawatinawvalley.com](http://skitawatinawvalley.com)

## Downhill Skiing & Snowboarding

The Tawatinaw Valley Ski Area is south of Rochester just off Highway 2, while the Long Lake Ski Area is south of Boyle on Highway 831. Both offer slopes for all ages, rentals, lessons, chalets and concession services. [skilonglake.com](http://skilonglake.com) | [tawatinawvalley.ca](http://tawatinawvalley.ca)

## Ice Fishing

Lakes in Athabasca-Boyle are open through the winter months for ice fishing. Check the official Alberta Sportfishing Regulations for full details, or for a special experience, contact Reel Angling Adventures to set up a guided expedition. [reelangling.com](http://reelangling.com)

## Curling

Both Athabasca and Boyle have thriving curling clubs that host a number of bonspiels during the winter. The Athabasca Curling Club can be reached through the Athabasca Regional Multiplex at [780-675-2967](tel:780-675-2967), while the Boyle Curling Club can be reached through the Village of Boyle, [780-689-3643](tel:780-689-3643).

## Skating

Arenas at the Athabasca Regional Multiplex ([780-675-2967](tel:780-675-2967)), Millview Recreation Complex ([780-689-3643](tel:780-689-3643)), and Calling Lake Arena ([780-331-2603](tel:780-331-2603)) offer indoor public skating and drop-in shinny through winter. Outdoor ice surfaces are kept flooded around Athabasca (Cornwall & Hees Estates) in places like Rochester, Colinton, Island Lake South, Grassland, Wandering River and Richmond Park.

## RIVER RUNNERS

With an annual membership of around 200, the Athabasca River Runners Snowmobile Club is an enthusiastic, family-oriented group with plenty to be proud of: they won the ASA Excellence Award for Outstanding Snowmobile Club in Alberta for the 2013/14 year, and they put Athabasca on the map as SnoRiders Magazine's No. 1 snowmobiling destination Alberta in the 2016 Sled Town ShowDown.

The club's 300 kilometres of groomed and well-marked trails pass through beautiful boreal forests west of Athabasca. There are 5 open fire pit areas where you can stop, always stocked with plenty of dry wood. Three of the locations – Spotted Horse Lake, September Lake, and Kuzyk's – have warm-up shacks.

The annual family-friendly rally in February has short and long runs fit for any style of snowmobiler. [athabascariverrunners.com](http://athabascariverrunners.com)



**NEW Skate Park now open!**

**Splash Park!**

**Walking Trails and an Amazing Library!**



The Boyle and area offers numerous recreational opportunities including several lakes, 2 golf courses (Skeleton Lake & Northern Ridge Long Lake) and endless miles of ATVing on crown land. Amenities within the Village of Boyle include

a youth centre, fitness centre, indoor and outdoor skating rink, a curling rink, community centre, ball diamonds, walking trails and a new spray park. We are also looking forward to the completion of a new skate board park.

We invite you check out our Town Hall, Library and Seniors Drop-In Center. Stop in Boyle for a wide range of goods and services provided with small-town hospitality.

# 18 GOLF PAR FOR THE COURSE

## Athabasca Golf & Country Club

The Athabasca Golf & Country Club is a championship-calibre 18-hole course that is the hidden gem of golf in Northern Alberta. It offers a licensed clubhouse, Fox Den Restaurant, pro shop and the capacity to hold tournaments and special events.

[780-674-4599](tel:780-674-4599) | [athagolf.com](http://athagolf.com)

Camping facilities are also available at the adjacent Blueberry Hill RV Park – [780-675-3733](tel:780-675-3733), [blueberryhillrvpark.ca](http://blueberryhillrvpark.ca)

## Skeleton Lake Golf & Country Club

Located east of Boyle along the picturesque shores of Skeleton Lake, this par-36 nine-hole course is both fun and challenging. It hosts the annual Bryan Mudryk Golf Classic fundraiser for the Cross Cancer Institute. Club and cart rentals are available.

[780-689-2455](tel:780-689-2455) |

[skeletonlakegolfandcountryclub.com](http://skeletonlakegolfandcountryclub.com)

## Riverbank Golf & RV Park

Located just south of Wandering River off Highway 63, this fun 9-hole golf course is nestled along the banks of the Wandering River. Riverbank boasts reasonable golf fees and excellent food, so come down and check out this little hidden gem.

[780-771-2582](tel:780-771-2582) | [riverbankgolfandriv.com](http://riverbankgolfandriv.com)

## Northern Ridge Golf Course

Located south of Boyle on Highway 831 near Long Lake Provincial Park, Northern Ridge Golf Course is easily recognizable by the antique farm machines adorning the tee boxes. The nine-hole course has grass greens, a clubhouse and camping on site.

[780-576-3939](tel:780-576-3939) | [northernridgegolf.ca](http://northernridgegolf.ca)



## Hidden Valley Golf Course

Located in the southwest corner of region, 30 minutes north of Westlock on Highway 44, Hidden Valley Golf Course is a nine-hole golf course with campground.

[780-954-2262](tel:780-954-2262) | [hiddenvalleygolf.ca](http://hiddenvalleygolf.ca)

## Rocky Lane Fairways & Recreation

Located 3 km south of Athabasca, just off Highway #2, Rocky Lane Fairways is a family-focused recreational facility offering Par 3 golf, disc golf, soccer golf, fling golf and if the weather is poor, check out our top of the line golf simulator experience. Contact us for information on bookings for camping, corporate parties, reunions, weddings, and team building events. Google Rocky Lane Fairways and check out our website.

[780-327-9671](tel:780-327-9671) | [rockylanefairways@gmail.com](mailto:rockylanefairways@gmail.com)



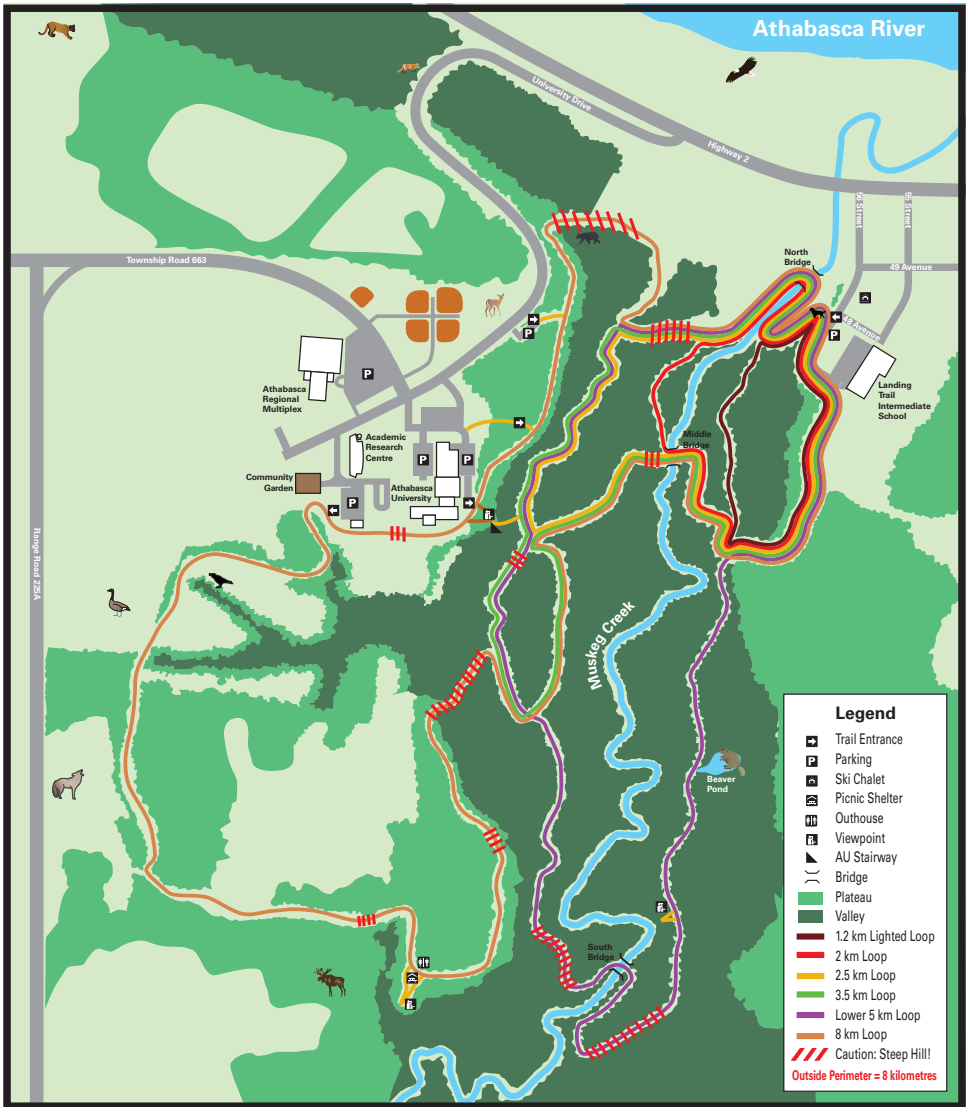
**9 Holes  
Grass Greens  
3221 Yards, Par 36**

- Fully Stocked Pro Shop
- Licensed Restaurant

8 km East of Boyle on Hwy 663

Phone: **780-689-2455**  
Fax: **780-689-2477**  
Email: [sigolf@mcsnet.ca](mailto:sigolf@mcsnet.ca)

[www.skeletonlakegolfandcountryclub.com](http://www.skeletonlakegolfandcountryclub.com)





## TAKING CARE

### COUNSELLING & CONSULTING LTD.

JACKIE SHANK - MACP, RSW

*Individual/Family Therapist*

Ph. 780-213-0917 • Email: [takingcare@mcsnet.ca](mailto:takingcare@mcsnet.ca)

[www.takingcarecounselling.ca](http://www.takingcarecounselling.ca)

*Confidential Individual, Couple & Family Counselling*





# Athabasca region

NATURE HISTORY EVENTS

v i s i t a t h a b a s c a . c a

## Highways

- Primary
- Secondary

## Trails

- Trans Canada Canoe Trail
- Motorcycle Route
- Athabasca Landing Trail (Complete)
- Athabasca Landing Trail (In Progress)
- Trans Canadian Snowmobile Trail
- Athabasca River Runners Trail

- Trail Head
- Staging Area
- Peace River Trail

## Attractions

- Greenhouse
- Bird Watching
- Stocked Fish Pond
- Baseball Diamond
- Bowling Lanes
- Golf Course
- Historical Site
- Tours

## Amenities

- Rodeo Grounds / Agriplex
- Curling Rink
- Community Hall
- Airport

## Camping

- Private Campground
- Municipal Campground
- Provincial Campground



- 1 Ghost Lake Campground
- 2 Narrow Lake Campground
- 3 Long Lake Campground
- 4 Fortfar Recreational Park
- 5 Baptiste Lake Campground
- 6 Island Lake Campground
- 7 Juddish Lake Campground
- 8 Hope Lake Campground
- 9 North Buck Lake Campground





# Athabasca region

Highways

Secondary

Primary

Trails

Athabasca Landing Trail (Finished)

Trail Head

Walking Trail

Trans Canada Canoe Trail

Off-Leash Dog Park



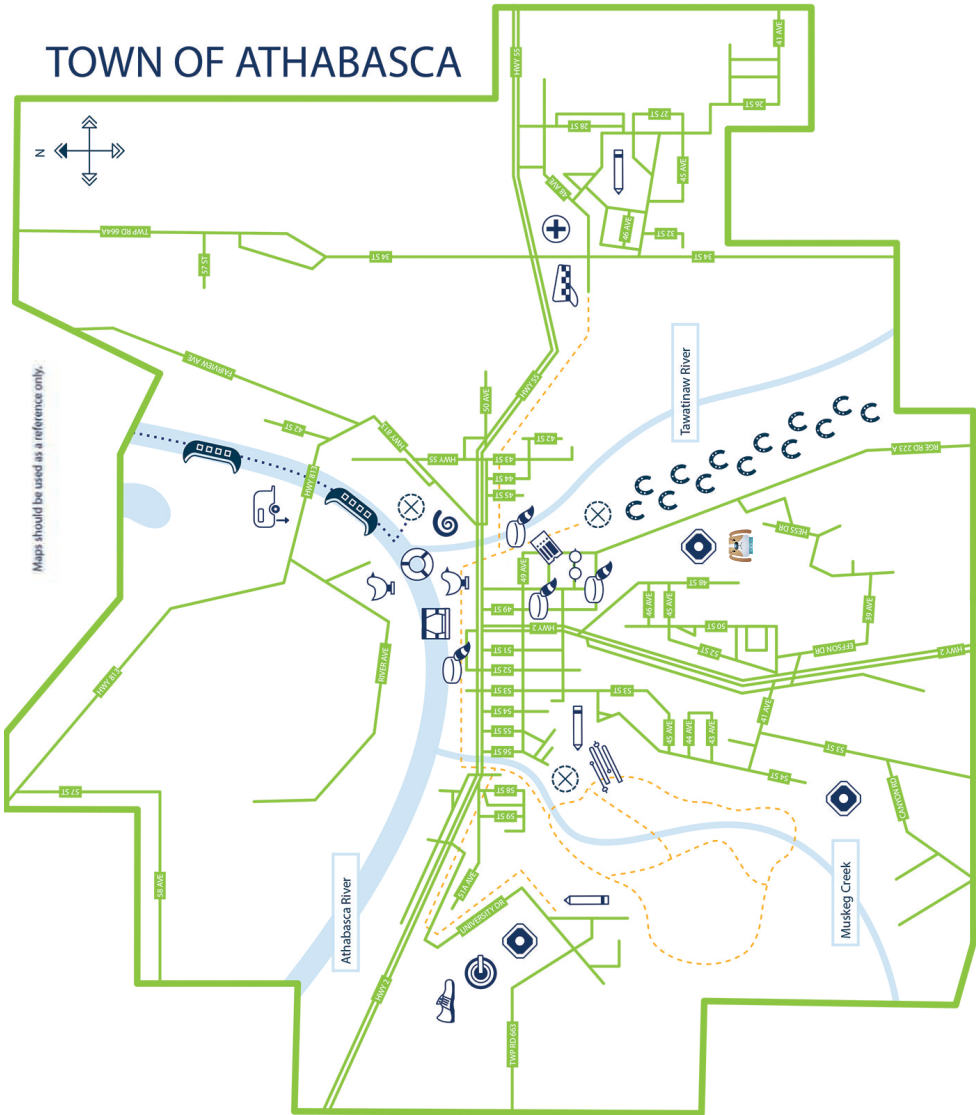
NATURE HISTORY EVENTS

visitathabasca.ca

## TOWN OF ATHABASCA



Maps should be used as a reference only.







Attractions

-  Baseball Diamond
-  Historical Site
-  Riverfront Stage
-  Theatre
-  Spray Park / Skateboard Park
-  Library
-  Swimming Pool
-  Playground / Park
-  Cross Country Ski Chalet

Amenities

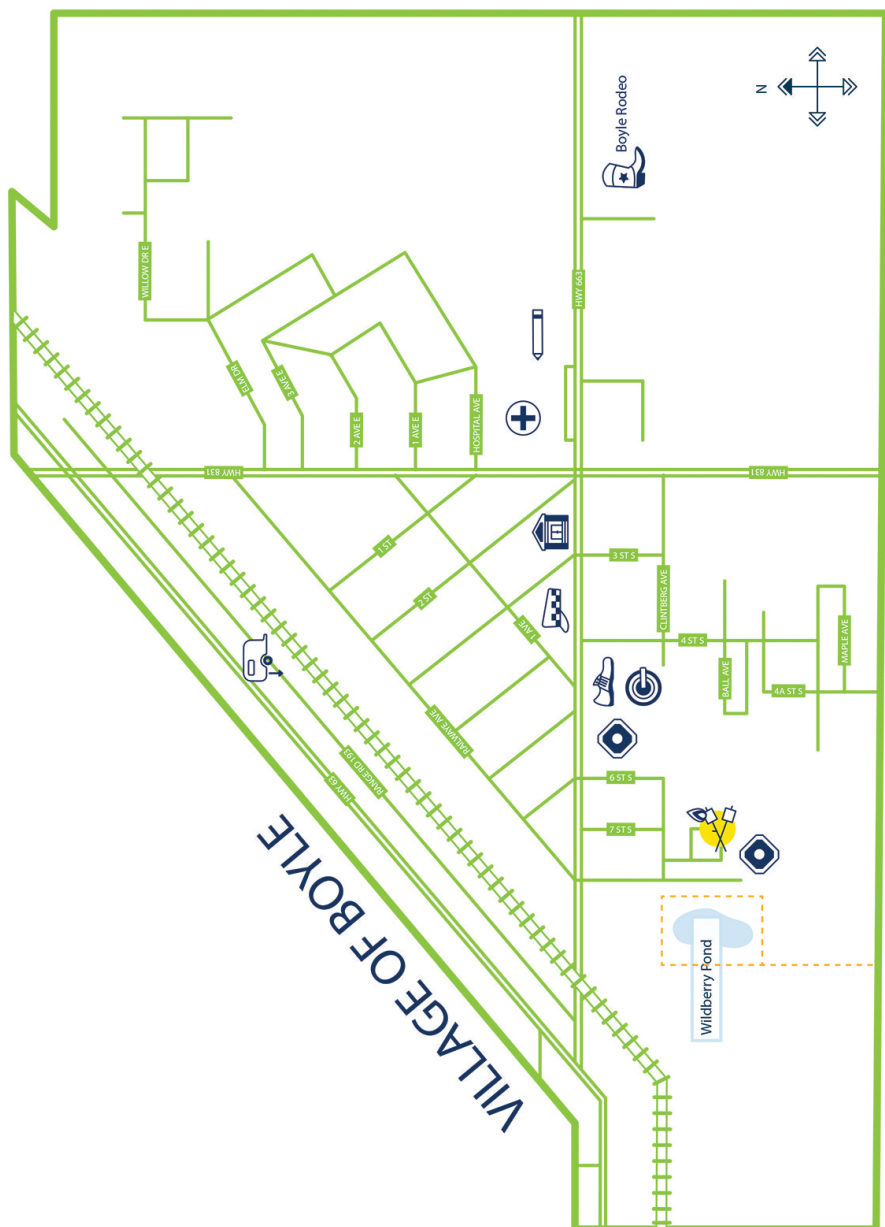
-  Multiplex / Arena
-  Rodeo Grounds / Agriplex
-  Curling Rink
-  Community Hall

Camping

-  Municipal Campground
-  Boat Launch
-  Semi Dumps

Services

-  School
-  RCMP
-  Hospital



VILLAGE OF BOYLE

Wildberry Pond

## Amber Valley Chicken Supper

Amber Valley was settled in the early 1900s by black immigrants from Oklahoma seeking a better life. The twice-annual chicken suppers in **April** and **October** commemorate this history with traditional fried chicken, biscuits, corn fritters and vegetables. Visit the website for dates.

## Athabasca Legion

Stop by the Athabasca Legion Branch #103 for a beverage and some time with friends. It's the place to be in town Friday nights from September to May, when teams get together for a battle of the wits with Pubstumpers. Open Crib night runs Thursday from September to May. [780-675-2173](tel:780-675-2173)

## Athabasca Ukrainian Folk Dance Club

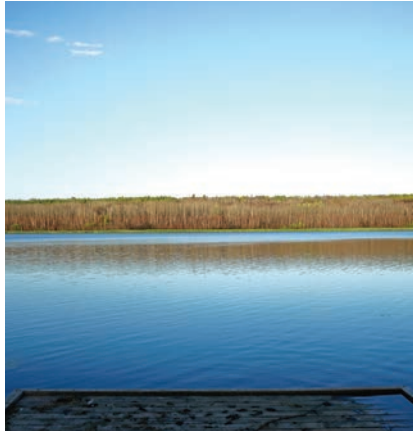
Celebrating 40 years, Athabasca has a strong Ukrainian dance club, with a long history of promoting quality dance and Ukrainian culture in our community. Watch for the yearly festival in the early spring.

Follow them on [Facebook](#).



## Big River Arts Society

A diverse group of artists who cultivate local talents, bringing arts to local schools and stages. Check out their website for details about upcoming shows, including the spring dinner theatre. Follow them on [Facebook](#).



## Boyle Twilight Twirlers Square Dancers

Looking for a fun afternoon out and some great exercise? Shine your shoes, primp your skirt and head over to Boyle to check out the local square dance club. They do-si-do on Friday evenings from 7 to 9 p.m. at the Boyle Seniors Drop-In Centre 4800 - 3rd St S. Follow their [Facebook](#) page for information.



- Powersports
- Marine
- Storage
- Lakelife

**Athabasca AB,  
Hwy 2 & RR230  
7806753009**

## Colinton Hotel

Weekly steak night at the historic Colinton Hotel is a unique local event that brings hundreds of people to the hamlet, every Thursday, from the beginning of May to the end of September. Enjoy a homecooked meal with locally raised beef steak on their large patio, and maybe you'll catch some live music! Seasonal daily soup specials (Oct. – March), sandwiches and appetizers are also available daily. Off sales and pre-made frozen meals as well as inspected beef are for sale. ATM on site. Book our Party Bus (Prison Bus!) for big groups, weddings, stags etc. Or for transportation to and from events.

[780-675-4744](tel:780-675-4744)



## Heartwood Folk Club

From David Francey to Cam Neufeld and the Gadjo Collective, this decades-old club hosts exceptional musicians in Athabasca throughout the year. Showcased in the Nancy Appleby Theatre, these performances allow up-and-coming artists and established musicians from around Canada to wow crowds with their talent. Tickets are available for most shows at Value Drug Mart (4911-50 Street) or Whispering Hills Fuels (2717 48 Avenue) in the town of Athabasca, or at the door. Season passes and gift certificates are also available. [heartwoodfolkclub.com](http://heartwoodfolkclub.com)





## Rhi-Defined New & Used

Thrift Store & More

Huge selection of gently used items such as clothing,  
footwear, household goods, furniture and (new) appliances.

**Free BBQ Canada Day  
weekend along with huge  
50% off sale entire store**

**Local handmade  
crafts such as  
moccasins, earrings,  
keychains, etc.**

**Hours**  
Monday - Friday 10am - 6pm • Saturday 10am - 5pm • Closed Sunday

**780-792-8125 • 5508-50th Ave. Athabasca**



KAPĀWINIHK WILDERNESS TRIATHLON



## Northern Lights Spiritus Singers

The Northern Lights Spiritus Singers is a holiday choir composed of 50 to 100 voices in five-part harmony. Every December, they put on a series of concerts filled with Christmas music that is one of the most highly anticipated events of the season. The Nancy Appleby Theatre has every seat filled for their thrilling performances. The concerts are by donation, with proceeds going to local charities.



## Pancake Breakfast - Athabasca Seniors' Centre

Our well known Pancake Breakfast is available the last Tuesday of every month, running from 7:30am - 10:00am! Only \$12.00 for pancakes, ham, sausages, eggs, juice & coffee! 4810-48th Street.



## Welcome to Athabasca County!

100% full real estate services, for ALL your real estate needs.

780-675-3332

3PERCENTREALTYPROGRESS.CA

4803B - 50 St., Athabasca, AB, T9S 1C8



Enclosed moving trailer FREE for all our clients.

## River Rats Festival

Athabasca's Magnificent River Rats Festival — one of Alberta's premier outdoor music events — offers two days of all-Canadian live entertainment on the scenic riverfront stage. Started in 1996, the Magnificent River Rats Festival has become a popular venue among some of Canada's best-known artists, who are consistently impressed by the unparalleled setting along Athabasca's picturesque and historic riverfront. It also serves as a showcase for talented local musicians, allowing regional bands to reach new audiences. Previous Magnificent River Rats headliners have included country music icons like The Road Hammers, High Valley, and Michelle Wright, popular folk artists that include Leahy, Valdy, and Gary Fjellgaard, and classic Canadian rockers like Randy Bachman, Kim Mitchell, Big Sugar and Finger Eleven. More recently, the festival has welcomed a new generation of Canadian performers, including Victoria Duffield, Dear Rouge and Tupelo Honey. Kids love the River Rats Festival too! The festival features a beer garden, classic car show 'n shine, arts & crafts vendors, on-site food services, a Canada Day parade, fireworks and more! [riverratsfestival.com](http://riverratsfestival.com). Follow them on [Facebook](#).



## Whispering Hills Country Music Association

Promoting country, western and old-time music as an integral part of Canadian culture and introducing young people to it, the association holds music jams on the first Sunday of every month from September to June at the Athabasca Senior's Drop-in Centre. [780-675-4828](tel:780-675-4828)



Landing Trail Intermediate School is a grade 4-6 school of approximately 280 students in the regular English stream and in French Immersion. We are located in a unique natural area that students make use of every day to learn and play. We prioritize academic and social success. New students are welcome!

<http://ltis.aspenview.org/>





# CAMPING

## WHERE TO REST YOUR TENT OR RV

### PROVINCIAL PARKS & RECREATION AREAS

#### Calling Lake Provincial Park

81 powered sites, lake access, boat launch, flush toilets. Located on the south side of Calling Lake, 57 km north of on Hwy 813.

#### Lawrence Lake Provincial Park

13 unserviced sites, picnic shelter, firewood, fire pits, boat launch. Located 47 km north of Athabasca on Hwy 2 towards Slave Lake.

#### Long Lake Provincial Park

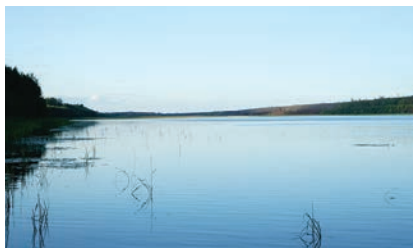
220 serviced and unserviced sites, boat launch, concession, rentals, playground, laundry, showers, firewood, fire pits, day use, designated swim area, reservations available. Access 20km south of Boyle on Hwy 63. 1-877-537-2757

#### North Lake Provincial Park

95 unserviced sites, 30 serviced sites, beach, playgrounds, boat launch, picnic table, fire pits, day use, lawn bowling, first come first served, access east of Boyle on Hwy 663. 780-689-4602

#### Poachers Landing Provincial Recreation Area

6 unserviced sites, picnic tables, fire pits, playground, boat launch, ATV's allowed, horse corrals, excellent trail network, North of Athabasca on ALPAC connector.



- Powersports
- Marine
- Storage
- Lakelife

**Athabasca AB,  
Hwy 2 & RR230  
7806753009**



## Athabasca Lions Campground

The Lions Campground is only 2.5 km from downtown Athabasca. Offering 10 power sites right across the road from Athabasca Golf & Country Club, campers have access to picnic tables, firepits, and a baseball diamond. A separate tenting area is available for those interested in a rustic experience. [780-675-3733](tel:780-675-3733)

## Blueberry Hill R.V. Park

44 serviced and 7 basic sites, plus 6 unit group camping, laundromat, well water, flush toilet, showers, playground, hiking trails, Access north of Athabasca on Hwy 813 located next to the golf course.

[780-675-3733](tel:780-675-3733) | [blueberryhillrvpark.ca](http://blueberryhillrvpark.ca)

## Chump Lake Campsite

15 unserviced sites, fire pits, picnic tables, boat launch, well water. Access east of Boyle on Hwy 63. First Come First Serve sites available.

## Grand Rapids Wilderness Adventures

“Experience the Athabasca River”

With a multi-day, river trip.

Grand rapids wilderness adventures.

Jet-Boat trips, historical tours, fishing packages, paddling trips, wildlife viewing, heli-flights, combined with, incredible scenery, untouched wilderness, and the natural wonders of the historic grand rapids. Trips include all meals, river transportation and log cabin accommodations, Over 30 years of providing safe and exciting wilderness adventures on the Athabasca River.

email - [grwadventures@gmail.com](mailto:grwadventures@gmail.com)

ph - (780) 689-0567

web - [Facebook.com/Athabasca.River](https://www.facebook.com/Athabasca.River)

web - [www.athabasca-river.com](http://www.athabasca-river.com)

## Katherine's Camping Corner

Located 11 km west of Grassland and featuring 20 year-round fully serviced sites, on site laundry and showers, playground, off-leash area and parking for heavy haul equipment.

[780-690-0714](tel:780-690-0714) | [780-519-0857](tel:780-519-0857) or email

[mmallock@yahoo.com](mailto:mmallock@yahoo.com) for information.

[katherinescampingcorner.info](http://katherinescampingcorner.info)

## River Meadows RV Park

52 Large unserviced sites only 10 minutes from Athabasca, right on the Athabasca River, ideal for boating, kayaking or fishing. Boat launch, boat

parking, beach area, day use area, horse shoe pits, fire pits, picnic tables, firewood, hiking trails, and ATV friendly. Nightly and seasonal spots available. [780-689-1565](tel:780-689-1565)

## Riverside Recreation Area

This park is a volunteer-based, pack in/ pack out facility - first come, first served. A great location for group camping, enjoy one of three available shelters, boat launch, quad trails, and walking trails. Use Riverside Campground as a base for golfing, fishing, and adventure! A new playground provides some fun for kids as you unwind in nature. The campground is run by the Richmond Park Hall Association, and mail-in donations for your use of the campground are appreciated. To access the campground, cross the river in the Town of Athabasca on Highway 813, then turn right on Twp Rd 684. Turn right on Range Road 214 and continue until you reach the campground.

## Rock Island Lake Campground

51 unserviced sites, boat launch, trails, no reservations, 30km north of Calling Lake on Hwy 813.

## Rocky Lane Fairways

Located 3 km south of Athabasca, just off Highway #2, please see page 18 for more information

## Shoreline Camping & Fishing Resort

160 Serviced sites plus group area, picnic shelter, swimming pool, flush toilet, showers, playground, boat launch, east of Boyle on Hwy 663. [780-689-4363](tel:780-689-4363)

## Smallwoods Campsite

60 unserviced seasonal sites, no ATV.

[780-213-0562](tel:780-213-0562)

## South Baptiste Campground

Enjoy one of 42 campsites with full hookups, water/sewer, and 15/30 amp and 50-amp power available. A facility with two bathrooms featuring hot showers and a coin-operated washer and dryer is also available for your convenience. Take in the beauty of Baptiste Lake, or enjoy exploring the area by land. Daily, monthly, and seasonal rates are available.

[780-689-7286](tel:780-689-7286) | [baptistelakecampingandstorage.com](http://baptistelakecampingandstorage.com)

# ATHABASCA COUNTY CAMPGROUNDS

Reservations for all County campsites can be made online at

[athabascacounty.com/services/campgrounds/](http://athabascacounty.com/services/campgrounds/)

All campgrounds are open mid-May to mid-September, weather dependent.

## Forfar Park

73 unserviced sites, group camping, ATV compound, well water, firewood, beaches, piers, playground, boat launch, RV dump station, day use area, fish cleaning station, picnic tables, fire pits, outhouses, campground managers onsite 24/7, access south of Athabasca Hwy 2.

## Hope Lake

53 unserviced sites, group camping, ATV compound, well water, firewood, beach, pier, playground, boat launch, RV dump station, day use area, fish cleaning station, picnic tables, fire pits, outhouses, campground managers onsite 24/7, access north of Boyle Hwy 63.

## Island Lake

12 unserviced sites, well water, playground, boat launch, pier, day use area, fish cleaning station, bird watching station, picnic tables, fire pits, outhouses, access northwest of Athabasca Hwy 2.

## Ghost Lake

4 unserviced sites, boat launch, pier, day use area, fish cleaning station, picnic tables, fire pits, outhouse, access northwest of Athabasca Hwy 2.

## Baptiste Lake

12 unserviced tenting sites, well water, pier, playground, boat launch, day use area, picnic tables, fire pits, outhouses, access west of Athabasca Hwy 2.

## Narrow Lake

8 unserviced sites, boat launch, pier, day use area, picnic tables, fire pits, outhouse, access south of Athabasca Hwy 2.

## Jackfish Lake

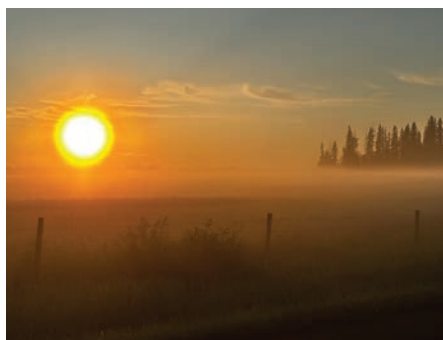
35 unserviced sites, group camping, well water, beach, piers, playground, boat launch, day use area, picnic tables, fire pits, outhouses, access east of Athabasca Hwy 55.

## Long Lake

3 unserviced sites, natural boat launch (small boats only), day use area, picnic tables, fire pits, outhouse, access south of Athabasca Hwy 2.

## North Buck Lake Narrows

6 unserviced sites, natural boat launch (small boats only), day use area, bird watching station, picnic tables, fire pits, outhouse, access north of Boyle Hwy 63.



**KATHERINE'S  
CAMPING CORNER**

GRASSLAND, ALBERTA  
MICHAEL & KATHERINE  
MALLOCK

780-690-0714 780-519-0857  
mmallock@yahoo.ca



## Camping Right Along the Athabasca River

Our RV park offers:

- Boat Parking • Firewood • Walking Trails • Year Round Storage
- Short Term/Long Term Rentals on Large Private Lots
- River Access for Boating/Fishing/Swimming

Located only 8km down river from the Town of Athabasca  
780-689-1565 • [rivermeadowsrvpark.weebly.com](http://rivermeadowsrvpark.weebly.com)

# REGIONAL LAKE AND FISHING GUIDE

Please note: This is a guide only, intended to identify the fish species available. Please read and follow the information regarding limits and regulations found in the official Alberta Fishing Guide when you purchase your Alberta fishing license.

| LOCATION                        | LOCATION / INFORMATION  | TYPES OF FISH |       |               |         |               |            |               |        |
|---------------------------------|---|---------------|-------|---------------|---------|---------------|------------|---------------|--------|
|                                 |   | Pike          | Perch | Walleye       | Goldeye | Rainbow Trout | Whitefish  | Grayling      | Burbot |
| Amisk Lake                      | Located east of Boyle on Highway 663. Closed April 1 to May 14.   | ✓             | ✓     | C&R Only      |         |               | ✓          |               | ✓      |
| Athabasca River                 | Boat launch located in the Town of Athabasca and campgrounds are located further upstream at Riverside Park and Poachers Landing. Closed Nov. 1st - May 31st. | ✓<br>50 cm    |       | ✓<br>50 cm    | ✓       |               | ✓<br>30 cm | ✓<br>C&R Only | ✓      |
| Baptiste Lake                   | Located 16 km west of Athabasca on Highway 2. Overnight campground at southwest corner of lake.   | ✓<br>C&R Only | ✓     | ✓<br>C&R Only | ✓       |               |            |               | ✓      |
| Boyle Pond                      | Located 5.5 km south of Boyle on west side of Hwy 831. Fishing pier.  |               |       |               |         | ✓             |            |               |        |
| Calling Lake Prov. Park         | Situated 60 kms north of Athabasca on Highway 813. Campground. Closed from April 1st to May 31st.   | ✓<br>C&R Only | ✓     | ✓<br>45-55 cm |         |               | ✓          |               | ✓      |
| Calling Lake Tributaries        | Limits apply to lake and tributaries and outlet downstream for 1 km. Closed from Nov. 1st to May 31st.  | ✓<br>C&R Only | ✓     | ✓<br>45-55 cm |         |               | ✓          |               | ✓      |
| Fawcett Lake                    | Turn 27 km north of Smith. Campground west end of lake.   | ✓<br>C&R Only | ✓     | ✓<br>C&R Only |         |               |            |               | ✓      |
| Ghost Lake                      | About 32 km NW of Athabasca on Hwy 2, then 2.5 km west. Max. boat speed of 12 km/hour.  | ✓             | ✓     |               |         |               |            |               |        |
| Hope Lake                       | 20 km NE of Boyle. Campground with resident manager. Max. boat speed of 12 km/hour. Closed April 1 to May 14.   | ✓<br>63cm     | ✓     | ✓<br>C&R Only |         |               | ✓          |               | ✓      |
| Island Lake                     | Located 28 km west of Athabasca on Highway 2. Campground on east side of lake. Closed April 1 to May 14.  | ✓<br>55 cm    | ✓     | ✓<br>C&R Only |         |               |            |               |        |
| Jackfish Lake                   | 8 km NE of Athabasca. Campground and boat launch. Closed April 1 to May 14.   |               |       |               |         |               |            |               |        |
| Lawrence Lake Provincial Park   | 50 km NE of Athabasca. Campground and boat launch.  | ✓             | ✓     |               |         |               |            |               | ✓      |
| Long Lake Provincial Park       | Located 20 km south of Boyle on Sec Rd 831. Camping, boat launch, boat rentals. Closed April 1 to May 14.   | ✓<br>C&R Only | ✓     | ✓<br>C&R Only |         |               | ✓          |               |        |
| Meyer Lake                      | ATV access only. Access by heading west on cutline 2 km South of Chain Lake (Lower). Reference to a map is recommended.                                       | ✓             | ✓     |               |         |               |            |               |        |
| Narrow Lake                     | West 30 km on highway 663 from Meanook. Camping, boat launch at Forfar Recreation park.   | ✓<br>C&R Only | ✓     | ✓<br>C&R Only |         |               |            |               |        |
| North Buck Lake Provincial Park | Campground available. Closed April 1 to May 14. 4 km north of Caslan on RR 173A.  | ✓<br>C&R Only | ✓     |               |         |               | ✓          |               | ✓      |
| Orloff Lake                     | Located 20 km northwest of Calling Lake. Limited access.  | ✓<br>C&R Only | ✓     | ✓<br>50 cm    |         |               | ✓          |               | ✓      |
| Rock Island Lake                | 25 km north of Calling Lake. Closed April 1 to May 14.  | ✓<br>C&R Only | ✓     | ✓<br>C&R Only |         |               | ✓          |               | ✓      |
| Skeleton Lake                   | Located 5 km east of Boyle on Highway 63. Closed April 1 to May 14.   | ✓<br>63cm     | ✓     | ✓<br>C&R Only |         |               | ✓          |               | ✓      |

# FISHING GUIDE



## HOTELS &amp; MOTELS

**Athabasca Hillside Motel**

4804 46A Ave. Athabasca  
1-888-675-8900 | 780-675-5111 |  
[athabascahillsidemotel.net](http://athabascahillsidemotel.net)

**Athabasca Lodge Motel**

4004 Highway 2, Athabasca  
1-888-500-2266 | 780-675-2266 |  
[athabascamotel.com](http://athabascamotel.com)

**Athabasca Super 8 Hotel**

4820B Woodheights Rd. Athabasca  
1-877-502-5384 | 780-675-8888 |  
[super8.com](http://super8.com) |  
[gm@super8athabasca.com](mailto:gm@super8athabasca.com)

**Boyle Motor Lodge**

5101 Railway Ave. Boyle  
1-888-689-3994 | 780-689-3944

**Colinton Hotel**

AB-663, Colinton  
780-675-4744

**Days Inn**

2805 48 Ave. Athabasca  
1-888-675-7020 | 780-675-7020

**Grassland Motel**

4918-49 Ave. Grassland  
780-525-3740

**Grassland Ramada**

4701 50 Ave. Grassland  
1-800-854-9517

**Twilight Country Motel**

5102 Lakeview Rd Boyle  
780-689 2188

**Wandering River Motel**

Wandering River, Alberta  
780-771-3777

## CABIN RENTALS

**Grand Rapids****Wilderness Adventures**

160 miles downstream from Athabasca  
780-675-3784

For more information  
please see page 29.

## BED &amp; BREAKFAST

Looking for a current  
list of top rated  
vacation rentals in  
Athabasca?  
Check listings at  
[airbnb.ca/athabasca-  
canada/stays](http://airbnb.ca/athabasca-canada/stays)



**WATER PARK  
KITCHENETTE SUITES**

780-675-8888  
Toll Free 877-502-5384  
4820B WOOD HEIGHTS RD  
ATHABASCA, ABT9S 1V4  
[www.Super8.com](http://www.Super8.com)



PHOTOGRAPHED AT 49TH STREET GRILL IN ATHABASCA

## ATHABASCA

|   |                       |   |              |
|---|-----------------------|---|--------------|
| 49th Street Grill<br><a href="http://49thstreetgrill.com">49thstreetgrill.com</a> | 4901 49 St.           | Licensed, pizza, pasta & steakhouse, special events | 780-675-5418 |
| A&W   | 4820 Woodheights Rd.  | Fast food, dining room, drive-thru                  | 780-675-0327 |
| Athabasca Burger Bar  | 4719 50 St.           | Fast food, take-out                                 | 780-675-2672 |
| Boston Pizza  | 2201 48 Ave.          | Pizza, grill, licensed                              | 780-675-3761 |
| Dominos<br><a href="http://dominos.ca">dominos.ca</a>                             | 4810 - 50 St.         | Fast food, pizza, take-out or delivery              | 780-675-7575 |
| Fox Den Restaurant<br><a href="http://athagolf.com">athagolf.com</a>              | Athabasca Golf Course | Summer only. Patio, licensed, special events        | 780-675-7033 |
| Golden Fountain Restaurant  | 4905 49 St.           | Chinese & buffet, licensed                          | 780-675-2781 |
| Happy Garden Western & Chinese  | 4912 50 St            | Licensed  | 780-675-3551 |
| Johnny's Eatery   | 4904-50 St.           | Eat-in, take out, events, licensed                  | 780-213-9155 |
| Mike's Pizza & Restaurant<br><a href="http://mikespizza.ca">mikespizza.ca</a>     | 5212 50 Ave.          | Eat-in, licensed, delivery, take-out                | 780-675-5020 |
| Multiplex - Time Out Concession   |                       |   |              |
| Paddymelon's Gifts, Espresso & Eatery   | 4911A 49 St.          | Specialty coffees, teas, and fresh baked goods      | 780-675-1103 |
| Neighbour's Pub   | 4810 50 St.           | Serves lunch, dinner, drinks and coffee             | 780-675-9219 |
| Sal's Famous<br><a href="http://salsfamouscanada.com">salsfamouscanada.com</a>    | 5012 50th Ave.        | Dining & take-out                                   | 780-675-5616 |
| Subway  | 4812 50 St.           | Fast food, take-out                                 | 780-675-5588 |
| Tim Horton's  | 2201 48 Ave.          | Coffee and sandwiches                               |              |
| Van Hout Bakery   | 4901 51 St.           | Soups, sandwiches, best doughnuts you'll ever eat   | 780-675-2128 |

# RESTAURANTS & MORE

## BOYLE

|                           |   |  |              |
|---------------------------|---|--|--------------|
| Boyle Burger Bar          | 4911 8 St.  | Chinese & Western cuisine, weekday lunch buffet        | 780-689-4086 |
| Boyle Pizza House         | 5601 Railway Ave.   | Pizza/subs   | 780-689-4646 |
| Boyle Truck Stop          | 5100 Lakeview Rd.   | Western & Chinese                                      | 780-689-4999 |
| Pepper Tree Café          | 5102 3rd St.  | Chinese Food   | 780-334-1888 |
| The Gathering Place Co-op | Located just south of Long Lake Provincial Park and north of Waskatenau on Hwy 831. | Western Cuisine and Special Seasonal and Holiday Menus | 780-801-0830 |

## COLINTON

|                |                    |   |              |
|----------------|--------------------|---|--------------|
| Colinton Hotel | Main St., Colinton | Steak Night, Thursdays<br>Seasonal Soups,<br>Sandwiches and<br>Appetizers, Licensed | 780-675-4744 |
|----------------|--------------------|---|--------------|

## GRASSLAND

|                        |        |                          |              |
|------------------------|--------|--------------------------|--------------|
| Esso Family Restaurant | Hwy 63 | Family dining            | 780-525-2900 |
| Subway                 | Hwy 55 | Subs, eat-in or take-out | 780-525-3388 |
| Wally's Fast Food      | Hwy 63 | Drive thru, eat-in       | 780-525-2522 |
| Eldorado's (Flying J)  | Hwy 55 | Family dining            | 780-525-2290 |



[www.49thstreetgrill.com](http://www.49thstreetgrill.com)

**(780) 675-5418**

**4901 - 49 St., Athabasca**

Monday to Saturday: 11:00 am-9:00 pm





## WANDERING RIVER

|                               |         |                                       |              |
|-------------------------------|---------|---------------------------------------|--------------|
| A&W                           | Hwy 63  | Fast food                             | 780-993-2580 |
| Burger King                   | 2nd St. | Fast food                             | 780-485-0055 |
| Riverbank Golfing & Clubhouse | Hwy 63  | Seasonal, Western & Ukrainian cuisine | 780-771-2582 |

## FOOD TRUCKS

Check out the great food trucks that run April to September!

### Minhgo's Way

No bells or whistles, just great food!  
780-213-4174 and follow on [Facebook](#).

### The Keep Kafe (Boyle)

Catering and events. Check out the amazing smoked brisket. 780-689-7229 and follow on [Facebook](#).

### Val and Chris on the Run

Catering, tournaments, auctions, festivals. Follow on Facebook under Christopher's Concession 780-689-7734



Upscale Eatery With House Made Delights  
johnnyseateryath@gmail.com

**780-213-9155**



4904 - 50 Street, Athabasca



Tipton's  
**independent**  
YOUR INDEPENDENT GROCER

Hours of  
Operation:  
Monday to Sunday

8 a.m. to 9 p.m.

**780.675.8402**

**5007 52 Street,  
Athabasca**





- Fishing Tackle
- Baseball
- Bike Sales and Repairs
- Live and Frozen Bait
- Firearms and Ammo Sales
- Hunting and Fishing Licences
- Hockey Sales and Skate Sharpening

4914 - 50 STREET ATHABASCA, AB T9S 1E3  
PHONE: 780-675-2000 TOLL-FREE: 1-866-700-3337  
WEBSITE: <https://www.cheapseatssports.com>



# SELECT

EQUIPMENT RENTALS INC.



## Bobcat®

Your Local  
Grounds Maintenance  
Bobcat Dealer

4205-50 Ave.,  
Athabasca

Proudly Serving Our Community Since 1999

# 780-675-5414



*The Road to hope is best travelled together*

## ROAD TO HOPE

COMMUNITY SUPPORT FOUNDATION

The Road to Hope Community Support Foundation is a non-profit organization that provides transportation to those who are dealing with Cancer, at no charge. We are currently servicing anyone in the Lac La Biche and Athabasca Counties.

We pick up our clients at their homes, get them to their Cancer related appointments, and back home again. Companions are welcome to join them, also at no charge.



[www.roadtohope.ca](http://www.roadtohope.ca)

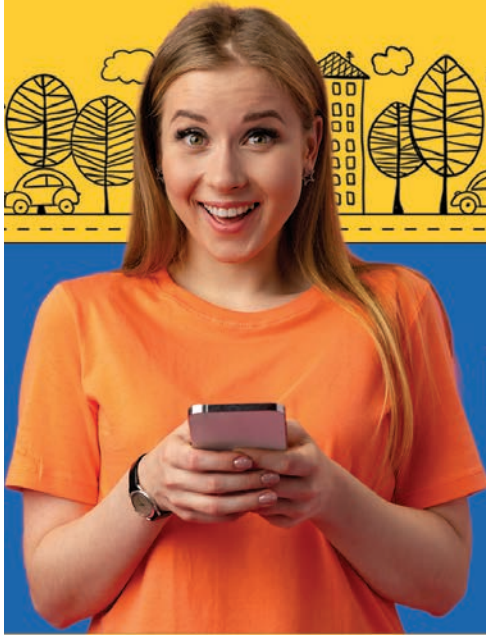


780-327-9442



[coordinator@roadtohope.ca](mailto:coordinator@roadtohope.ca)







# Local News in the palm of your hand


Don't miss out on local news  
It's easy to add us to your mobile devices

Facebook & Instagram are blocking all Canadian news  
**Come directly to us for all your local news**

#### Apple iOS instructions:

- 1) Open Safari (or other browser) on Apple device
- 2) Go to <https://www.townandcountrytoday.com>
- 3) Select the  Share icon
- 4) Scroll down and Select "Add to Home Screen"
- 5) A **Local News** icon is now on your devices Home Screen
- 6) Tap  to launch our website anytime

#### Android OS instructions:

- 1) Open your **web browser** of choice on Android device
- 2) Go to <https://www.townandcountrytoday.com>
- 3) From ellipses (top right), select "Add to Home Screen"
- 4) Click "Install"
- 5) A **Local News** icon is now on your devices Home Screen.
- 6) Tap  to launch our website anytime.

See all your latest  
Local News  
published daily



**TownandCountryTODAY.com**  
POWERED BY ATHABASCA, ADVOCATE,  
BARRHEAD LEADER, WESTLOCK NEWS

**GREAT WEST  
MEDIA** LP

**RCMP – Fire – Ambulance – 911***All addresses are in Athabasca unless noted otherwise:***Hospitals:**

|                             |                    |              |
|-----------------------------|--------------------|--------------|
| Athabasca Healthcare Centre | 3100 48 Ave.       | 780-675-6000 |
| Boyle Healthcare Centre     | 5004 Lakeview Road | 780-689-3731 |

**Medical Centres:**

|                                     |             |              |
|-------------------------------------|-------------|--------------|
| Athabasca Family Health Centre      | 4915 52 St. | 780-675-5018 |
| Athabasca Professional Building     | 4903 51 St. | 780-675-2498 |
| Silver Birch Medical Centre (Boyle) | 5114 3 St.  | 780-689-0003 |

**Pharmacies:**

|                       |                   |              |
|-----------------------|-------------------|--------------|
| Loblaw Pharmacy       | 5007 52 St.       | 780-675-8410 |
| Medicine Shoppe       | 2810B 48 Ave.     | 780-675-3855 |
| Value Drug Mart       | 4911 50 St.       | 780-675-2188 |
| Value Drug Mart Boyle | 5407 Railway Ave. | 780-689-2425 |

**Dentists/Denturists:**

|                          |               |              |
|--------------------------|---------------|--------------|
| Athabasca Dental Clinic  | 2810A 48 Ave. | 780-675-5595 |
| Athabasca Denture Clinic | 4818 49 St.   | 780-675-7070 |
| Morrill Dental Clinic    | 4918 48 St.   | 780-675-5630 |
| Boyle Denture Clinic     | 5100 3 St.    | 780-689-3334 |

**Optometrists:**

|                   |  |              |
|-------------------|--|--------------|
| Riverside EyeCare |  | 780-675-2749 |
|-------------------|--|--------------|

**Chiropractors:**

|                      |              |              |
|----------------------|--------------|--------------|
| Compass Chiropractic | 4916B 50 St. | 780-675-2692 |
| Dr. Kurt Deutscher   | 4907 51 St.  | 780-675-4030 |

**Automotive Parts, Repairs, and Tires:**

|                                    |                   |              |
|------------------------------------|-------------------|--------------|
| Affordable Mechanical Services     | 5314 41 Ave.      | 780-675-1911 |
| All-Pro Truck & Trailer Repair     | 3925 53 St.       | 780-675-3906 |
| Athabasca Automotive               | 4911 47 St.       | 780-675-2951 |
| Boyle Automotive & Industrial      | 5110 3 St.        | 780-689-3605 |
| Boyle Mechanical Services          | 5219 Railway Ave. | 780-689-2694 |
| Canadian Tire                      | 2913 48 Ave.      | 780-675-3019 |
| Gustafson's Trail Tire Auto Centre | 3915-53 St.       | 780-675-5869 |
| Hunter Motors                      | 4810 28 St.       | 780-675-2917 |
| Kal Tire                           | 5220 41 Ave.      | 780-675-2134 |
| Koch Auto Body                     | 3800 53 St.       | 780-675-1313 |
| NAPA – Central Sales & Service     | 5117 3 St., Boyle | 780-689-3613 |
| NAPA - D&L Automotive Parts        | 4006 53 St.       | 780-675-4272 |
| OK Tire - Athabasca                | 5602 50 Ave.      | 780-675-3211 |
| OK Tire - Grassland                | 1111 Main St.     | 780-525-2220 |
| PJs Mechanical & Consulting        | 665035A RR 230    | 780-675-1191 |
| SK Distributing                    | 5107 3 St., Boyle | 780-689-3447 |

**Outdoor Sports/OHV Sales and Repair:**

|                            |             |              |
|----------------------------|-------------|--------------|
| Athabasca Outdoor Products | 3608 Hwy 2  | 780-675-7009 |
| Grassland Trailer Sales    | 1 Main Ave. | 780-525-5820 |

**Towing:**

|                   |              |              |
|-------------------|--------------|--------------|
| Boyle Auto Rescue | Boyle, AB    | 780-689-3111 |
| Steve's Towing    | 4008 50 Ave. | 780-675-1133 |

**Boat Repairs and Storage:**

|                        |                     |              |
|------------------------|---------------------|--------------|
| Sun Seekers Adventures | Range Rd 230, Hwy 2 | 780-675-3009 |
|------------------------|---------------------|--------------|



TRAVEL LOCAL  
ENJOY LOCAL

FOLLOW US



Athabasca  
District  
Chamber of Commerce



SHOP LOCAL  
EAT LOCAL

FOLLOW US



WE HAVE IT ALL! LEARN MORE AT: [ATHABASCACHAMBER.ORG](http://ATHABASCACHAMBER.ORG)

Athabasca



District Chamber  
Of Commerce



JOIN TODAY!



## BECOME A MEMBER TODAY!

Your membership will make a difference to your business and our community. Events we sponsor:

- Canada Day Parade
- Business Awards
- 'Tis The Season (including Christmas Market, Fireworks, Moonlight Madness and more...)

As a Chamber member you are eligible to participate in The Chamber Plan. This plan provides exclusive benefits to large and small businesses including:

- Medical, life, and travel insurance
- Financial planning
- Discounts from services like fuel stations and courier services

Your local chamber is also here to support with Marketing via our social media platforms

Check out our members list online!

Athabasca  
District Chamber  
Of Commerce



Call  
780.519.1171  
or visit

[www.athabascachamber.org](http://www.athabascachamber.org)  
[athabascachamberofcommerce@gmail.com](mailto:athabascachamberofcommerce@gmail.com)

# Athabasca<sup>region</sup>

NATURE

HISTORY

EVENTS



## Live Life Outside!

The Athabasca Region has unique outdoor recreational and interactive cultural experiences waiting for you to discover.

[visitathabasca.ca](http://visitathabasca.ca)



[ted@athabascacounty.com](mailto:ted@athabascacounty.com) | 780-675-2273