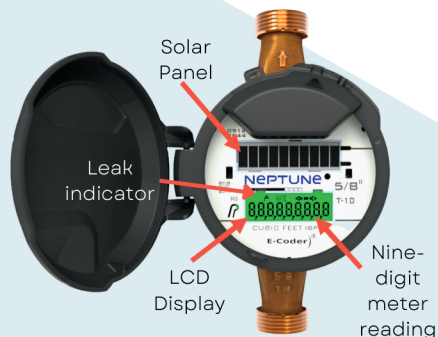


# YOU MAY HAVE A LEAK AND NOT EVEN KNOW IT



**The water meter can help you identify if you have a leak.**

The Town of Athabasca uses Meters which record usage in Cubic Metres (M3). These meters have a small “leak detector” symbol. To check these meters:

1. Ensure no water is being used.
2. Lift the black cover off the meter head.
3. Shine a flashlight on the solar panel to illuminate the display.
4. Watch the meter for a minute or more.
5. If the leak indicator is flashing it indicates that you may have an intermittent leak.
6. If the leak indicator is continuously visible, water has been used continuously during the past 24-hour period. You likely have a leak.

Another test you may perform is the overnight meter test.

1. Write down the number shown on the display. Do not use any water once the test has begun.
2. Return to check the meter the following morning. If the numbers have not changed, you do not have a leak during this time frame. If the numbers have changed, something has used water within your property.

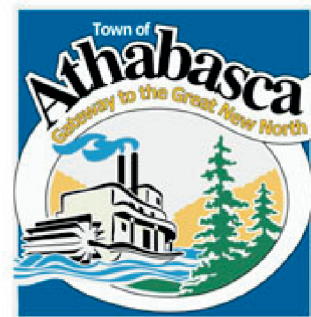
Possible Cause of Leak	Intermittent Leak	Continuous Leak
Outside faucet, garden or sprinkler system leaking	✓	✓
Toilet valve not sealed properly	✓	✓
Toilet running		✓
Faucet in kitchen or bathrooms leaking	✓	✓
Ice maker leaking		✓
Soaker hose in use		✓
Washing machine leaking	✓	✓
Dishwasher leaking	✓	✓
Hot water heater leaking		✓
Watering yard for more than eight hours	✓	✓
Continuous pet feeder		✓
Water-cooled air conditioner or heat pump	✓	✓
Filling a swimming pool		✓
Any continuous use of water for 24 hours		✓

## REMEMBER

- You may not hear or see a “leak”.
- A toilet leak that you may not even hear could cost you over \$1,000 a month!
- Most leaks are silent, and you will not necessarily see water on the floor!
- Check the meter regularly to assist you in determining if you have a leak. Find and repair all leaks as soon as possible.

## TOWN OF ATHABASCA

4705 - 49 Avenue  
Athabasca, AB T9S 1B7  
780 - 689 - 2063  
town@athabasca.ca  
www.athabasca.ca



# DETECT LEAKS AND SAVE MONEY



**HANDY TIPS TO CHECK FOR  
AND FIND WATER LEAKS IN  
YOUR HOME**



# TOILET LEAKS

Toilet leaks are the most common cause of high water and sanitary sewer bills. Most leaks associated with toilets occur due to problems with the Flapper Valve, high Water Levels and Handles.

**DID YOU KNOW?**  
A toilet that runs for one month can potentially cost up to \$1000 or more

Shut-Off Valve

Handle

Overflow Pipe

Flapper Valve

Chain

Float Ball

Tank

Toilet Bowl

## Leaky Flapper Valve

The flapper is the flush valve seal that serves to control the volume of water passing from the tank to the bowl during the flush cycle. The average life span of a flapper is five years. After this they can lose their resiliency and begin to leak. Chlorine based commercial toilet cleaners (solid or liquid) alter the water's pH level and may damage plastic and rubber parts. To check your toilet for flapper leaks:

1. Remove the tank lid from the toilet.
2. Add five drops of food colouring or a dye tablet to the tank.
3. After about 10 minutes, look in the bowl. If you see coloured water, you have a leak. If the bowl is clear, and all the coloured water remained in the tank, you do not have a leak.

## Water Level in The Tank

The water level in your tank should be set approximately one centimetre below the top of the overflow pipe. To check your toilet's water level:

1. Remove the tank lid from the toilet.
2. Check that the water level is not above the top of the overflow pipe. If it is, you need to adjust the float ball. If the float ball is broken, replace it.

## Toilet Handle Problems

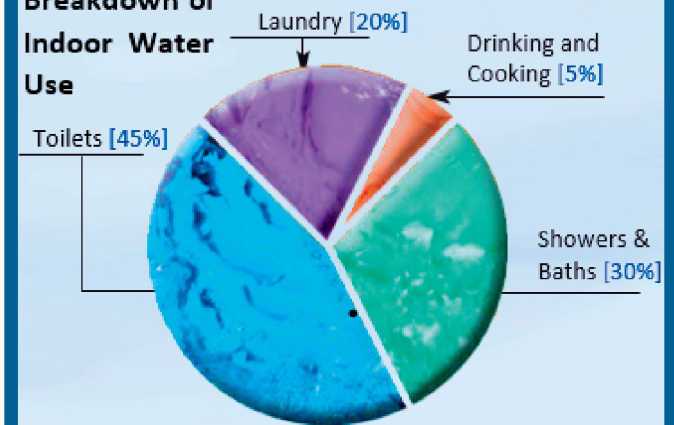
Handles that do not return to the correct position after flushing stop the flapper valve from closing and allow the water to continually run.

1. Make sure the handle's movement is not impeded by decorative tank covers.
2. Jiggle the toilet handle; if the water stops running, the chain or guide wire attached to the handle may be out of alignment.

# WATER USE

Three-quarters of all the water you use in your home goes down your bathroom drains, and the biggest single water guzzler is your toilet.

## Breakdown of Indoor Water Use



Utility customers are financially responsible for water that goes from the meter to the house.